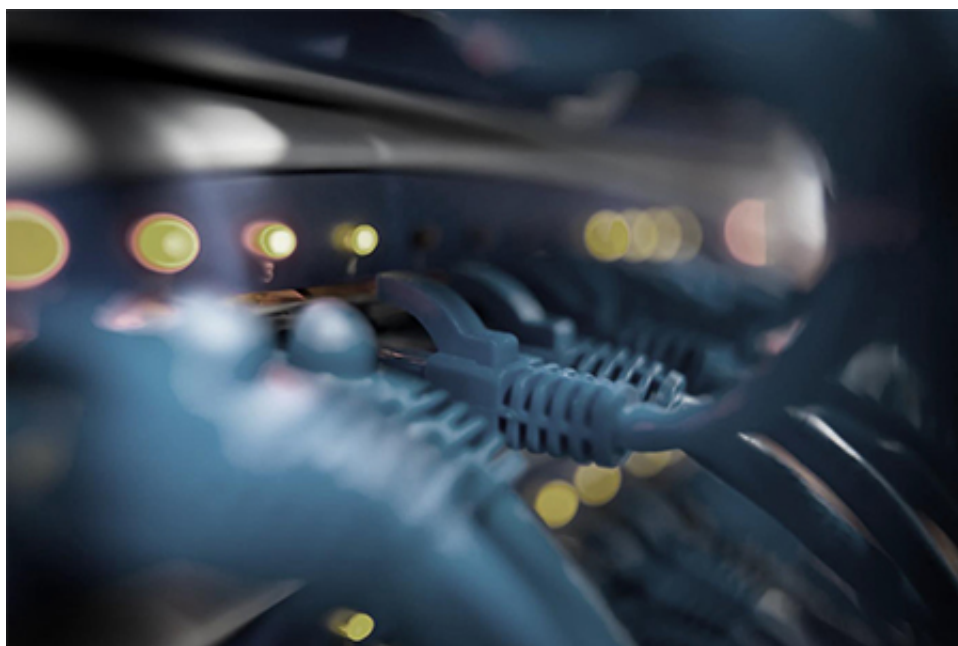


---

# Moxa Unmanaged Switches Selection Guide

## Unmanaged Switches

---



Moxa's Unmanaged Switches Product Selection Guide offers insights to help customers choose the ideal switches. Inside, find specifications, features and benefits of each model, ensuring informed decisions and optimal network performance.

### Entry Level Unmanaged Switches

	EDS-205 A		EDS-208 A			EDS-205	EDS-208		EDS-2005	EDS-2008	
Giga bit Ethernet ports	-		-			-	-		-	-	
Fast Ethernet ports	5	4	8	7	6	5	8	7	5	8	7

Fiber ports	0	1	0	1	2	0	0	1	-	0	1
SFP/ Combo Gigabit modules	-	-	-	-	-	-	-	-	-	-	-
Dimensions W x H x D (mm)	30 x 115 x 70		50 x 114 x 70			24.9 x 100 x 86.5	40 x 100 x 86.5		19 x 81 x 65 (-ELP Model), 18 x 81 x 65 (-EL Model)	36 x 81 x 65, 36 x 81 x 70.9 (-EL-M-ST), 36 x 81 x 68.9 (-EL-M-SC)	
Weight (g)	175		275			135	170		56 (-ELP) / 105(-EL)	90 (-ELP) / 163 (-EL)	
Quality of Service	-					-			Activated via DIP switch		
Broadcast Storm Protection	Activated via DIP switch					Always Active			Activated via DIP switch		
Housing	Metal					Plastic			Plastic (-ELP Model) / Metal (-EL Model)		
Ingress Protection	IP30					IP30			IP40		
Oper	-10°C to 60°C / -40°C to 75 °C (-T					-10°C to 60°C			-10°C to 60°C /		

ating Temperature	Model)				-40°C to 75 °C (-T Model)	
Operating voltage	9.6 to 60 VDC (Redundant dual inputs)		12 to 48 VDC		9.6 to 60 VDC	
Packet Buffer Size	384 Kbits	768 Kbits	512 Kbits	768 Kbits	768 Kbits	
MAC Table Size	1K	2K	1K	2K	2K	
Port break alarm	-	-	-	-	-	
MTBF (Years)	≈340*	≈300*	≈450*	≈40 to 45*	≈540*	≈400*
Warranty	5 years					
Certifications						
CE/FCC	✓	✓	✓	✓	✓	✓
UL 60950-1	-	-	-	-	-	-
UL 508	✓	✓	✓	✓	-	-
UL 61010-2-2011	-	-	-	-	✓	✓
EN 60950-1	✓	-	✓	✓	-	-

UL/c UL Class 1 Div. 2	✓	✓	-	-	-	-
ATEX Zone 2	✓	✓	-	-	-	-
DNV/ GL	✓	✓	-	-	-	-
ABS/ LR/N K	✓	✓	-	-	-	-
NEM A TS2	✓	✓	-	-	-	-
EN 5 0121 -4	✓	✓	-	-	-	-
EC 6 1850 -3	-	-	-	-	-	-

\*Standard: Telcordia(Bellcore),GB

### Advanced Level Unmanaged Switches

	EDS-305		EDS-308		EDS-309	EDS-316			EDS-2010 ML	EDS-2016 ML	EDS-2018 ML
Giga bit Ethernet ports	-	-	-	-	-	-	-	-	-	-	-
Fast Ethernet ports	5	4	7	6	6	16	15	14	8	14	16

Fiber ports	0	1	1	2	3	0	1	2	-	2	-
SFP/ Combo Gigabit modules	-		-		-	-			2	-	2
Dimensions W x H x D (mm)	53.6 x 135 x 105				80.1 x 135 x 105			36 x 135 x 95	36 x 135 x 95 58 x 135 x 95 (-ML-MM-SC)	58 x 135 x 95	
Weight (g)	790				1140			498	486 / 648 (Fiber Models)	683	
Quality of Service	-				-			Activated via DIP switch			
Broadcast Storm Protection	-				-			Activated via DIP switch			
Housing	Metal										
Ingress Protection	IP30										
Operating Temperature	0°C to 60°C / -40°C to 75°C		-10°C to 60°C / -40°C to 75 °C (-T Model)								

re	(-T Model)						
Operating voltage	12 to 48VDC (Redundant dual inputs)	9.6 to 60 VDC (Redundant dual inputs)					
Packet Buffer Size	384 Kbits	768 Kbits	512 Kbits	1.25 Mbits	4 Mbits	2 Mbits	4 Mbits
MAC Table Size	1K	2K	1K	4K	8K		
Port break alarm	✓						
MTBF (Years)	≈48**	≈29**	≈45*	≈29**	≈248*	≈236*	≈203*
Warranty	5 years						
Certifications							
CE/FCC	✓	✓	✓	✓	✓	✓	✓
UL 60950-1	✓	✓	✓	✓	-	-	-
UL 508	✓	✓	✓	✓	-	-	-
UL 61010-2-201	-	-	-	-	✓	✓	✓
EN 60950-1	-	✓	✓	✓	-	-	-
UL/cUL Class	✓	✓	✓	✓	✓	✓	✓

1 Div. 2							
ATEX Zone 2	✓	✓	✓	✓	✓	✓	✓
DNV/ GL	✓	✓	✓	✓	✓	✓	✓
ABS/ LR/N K	-	-	-	-	✓	✓	✓
NEM A TS2	-	-	-	-	✓	✓	✓
EN 5 0121 -4	-	-	-	-	✓	✓	✓
EC 6 1850 -3	-	-	-	-	-	-	-

\* Standard: Telcordia(Bellcore),GB

\*\*Standard: MIL-HDBK-217F

### Full Gigabit Unmanaged Switches

	EDS-G205	EDS-G308		EDS-G2005	EDS-G2008
Gigabit Ethernet ports	4	8	6	5	8
Fast Ethernet ports	-	-	-	-	
Fiber ports	-	-	-	-	
SFP/ Combo Gigabit modules	1	-	2	-	
Dimensions	29 x 135 x	52.85 x 135 x 105		19 x 81 x 65	36 x 81 x 65

W x H x D (mm)	105		(-ELP Model) 18 x 81 x 65 (-EL Model)	
Weight (g)	290	880	90 (-ELP) / 120 (-EL)	140 (-ELP) / 180 (-EL)
Quality of Service	-	-	Activated via DIP switch	
Broadcast Storm Protection	Always Active	Activated via DIP switch		Activated via DIP switch
Housing	Metal	Metal		Plastic (-ELP Model) / Metal (-EL Model)
Ingress Protection	IP30	IP30		IP40
Operating Temperature	-10°C to 60°C / -40°C to 75 °C (-T Model)			
Operating voltage	9.6 to 60 VDC (Redundant dual inputs)		9.6 to 60 VDC	
Packet Buffer Size	1 Mbits	4 Mbits		1.5 Mbits
MAC Table Size	8K		4K	
Port break alarm	-	✓		-
MTBF (Years)	≈322*	≈258*		≈389*
Warranty	5 years			
Certifications				
CE/FCC	✓	✓		✓
UL 60950-1	-	-		-
UL 508	✓	✓		-
UL 61010-2-20 1	-	-		✓
EN 60950-1	✓	-		-



UL/cUL Class 1 Div. 2	✓	✓	-
ATEX Zone 2	✓	✓	-
DNV/GL	-	-	-
ABS/LR/NK	-	-	-
NEMA TS2	-	-	-
EN 50121-4	✓	✓	-
EC 61850-3	-	-	-

\* Standard: Telcordia(Bellcore),GB

### PoE Unmanaged Switches

	EDS-G205A-4PoE		EDS-P206A		
PoE Gigabit Ethernet ports	4	4	-	-	-
PoE Fast Ethernet ports	-	-	4	4	4
Gigabit Ethernet ports	1	-	-	-	-
Fast Ethernet ports	-	-	2	-	1
SFP Gigabit modules	-	1	-	-	-
Fiber ports	-	-	-	2	1
Dimensions W x H x D (mm)	29 x 135 x 105		50.3 x 114 x 70		
Weight (g)	300		375		
Quality of Service	-		-		

Broadcast Storm Protection	-	-
Housing	Metal	
Ingress Protection	IP30	
Operating Temperature	-10°C to 60°C / -40°C to 75 °C (-T Model)	
Operating voltage	12 to 57 VDC (Redundant dual inputs)	
Packet Buffer Size	1 Mbits	768 Kbits
MAC Table Size	8K	2K
Port break alarm	-	-
MTBF (Years)	≈143.6*	≈159.7*
Warranty	5 years	
Certifications		
CE/FCC	✓	✓
UL 60950-1	-	-
UL 508	✓	✓
UL 61010-2-201	-	-
EN 60950-1	✓	-
UL/cUL Class 1 Div. 2	-	-
ATEX Zone 2	-	-
DNV/GL	-	-
ABS/LR/NK	-	-
NEMA TS2	-	-

EN 50121-4	✓	-
EC 61850-3	-	-

\* Standard: Telcordia(Bellcore),GB

### EN50155 Unmanaged Ethernet Switches

	TN5305	TN5308		
Fast Ethernet ports	5 (M12)	8 (M12)	-	4 (M12)
Gigabit Ethernet ports	-	-	-	-
PoE Fast Ethernet ports	-	-	8 (M12)	4 (M12)
Dimensions W x H x D (mm)	60 x 125 x 29.6	60 x 216.6 x 36.1 (-LV Series) 60 x 216.6 x 58.0(-MV Series)	60 x 216.6 x 48.7(-4PoE Series) 60 x 216.6 x 52.9 (-8PoE Series)	
Weight (g)	270	485 to 970 depending on the model	485 to 970 depending on the model	
Quality of Service	-	-	-	
Broadcast Storm Protection	-	-	-	
Housing	Plastic top cover, metal bottom plate	Metal		
Ingress Protection	IP67	P40		
Operating Temperature	-25 to 60°C/ -40°C to 75 °C (-T Model)	-25 to 60°C/ -40°C to 75 °C (-T Model)	-25 to 60°C/ -40°C to 75 °C (-T Model)	
Operating voltage	18 to 30 VAC 12 to 45 VDC	12 to 48 VDC (-LV Series)	48 VDC	

		72 to 110 VDC (-MV Series)	
Packet Buffer Size	-	-	-
MAC Table Size	-	-	-
Port break alarm	-	-	-
MTBF (Years)	≈394*	≈320* (-LV Series) ≈292* (-MV Series)	≈236* (-4PoE Series) ≈185* (-8PoE Series)
Warranty	5 years		
Certifications			
CE/FCC	✓		✓
UL 60950-1	✓		✓
Railway Application: EN 50155 EN 50121-4	✓		✓

\* Standard: Telcordia SR332